



[HOME](#) [ABOUT](#) [SPEAKING](#) [SHOP](#) [LINKS](#) [SUBSCRIBE](#) [CONTACT ▾](#)



WRITTEN BY THOMAS MAURER • JULY 2, 2020 • 10:10 AM • [HARDWARE](#), [MICROSOFT](#), [MICROSOFT AZURE](#), [WINDOWS SERVER](#) • 38 COMMENTS

Install Intel NUC Windows Server 2019 Network Adapter Driver

[HOME](#) — [HARDWARE](#), [MICROSOFT](#), [MICROSOFT AZURE](#), [WINDOWS SERVER](#) — [INSTALL INTEL NUC WINDOWS SERVER 2019 NETWORK ADAPTER DRIVER](#)

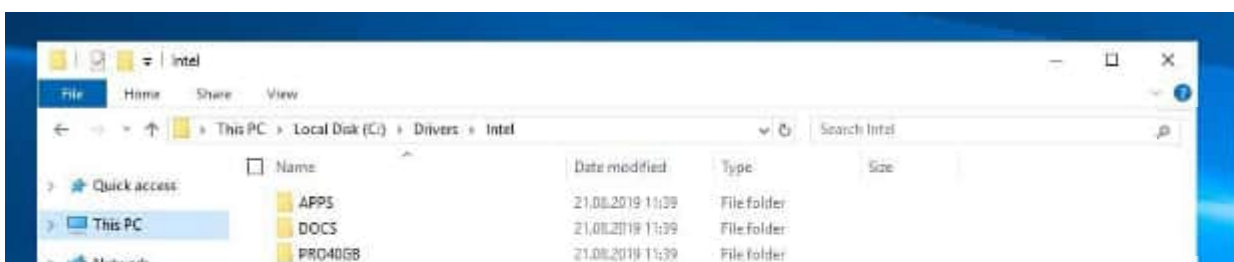


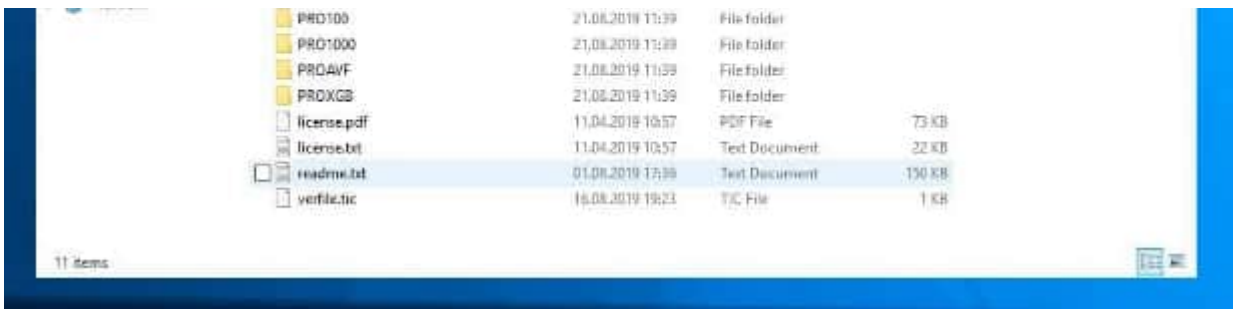


As you know, I am using an [Intel NUC as my Windows Server lab machine](#), where I run [Windows Server 2019](#) and Hyper-V on. Many people asked me about how you can install the Intel NUC Windows Server 2019 Network Adapter driver because there are no Windows Server 2019 drivers for it. My blog reader, Michael Williams, shared how you can install the Windows Server 2019 Network adapter drivers on the Intel NUC 8th generation.

Here are the simple steps you can follow to install the Intel NUC Windows Server 2019 Network Adapter Driver:

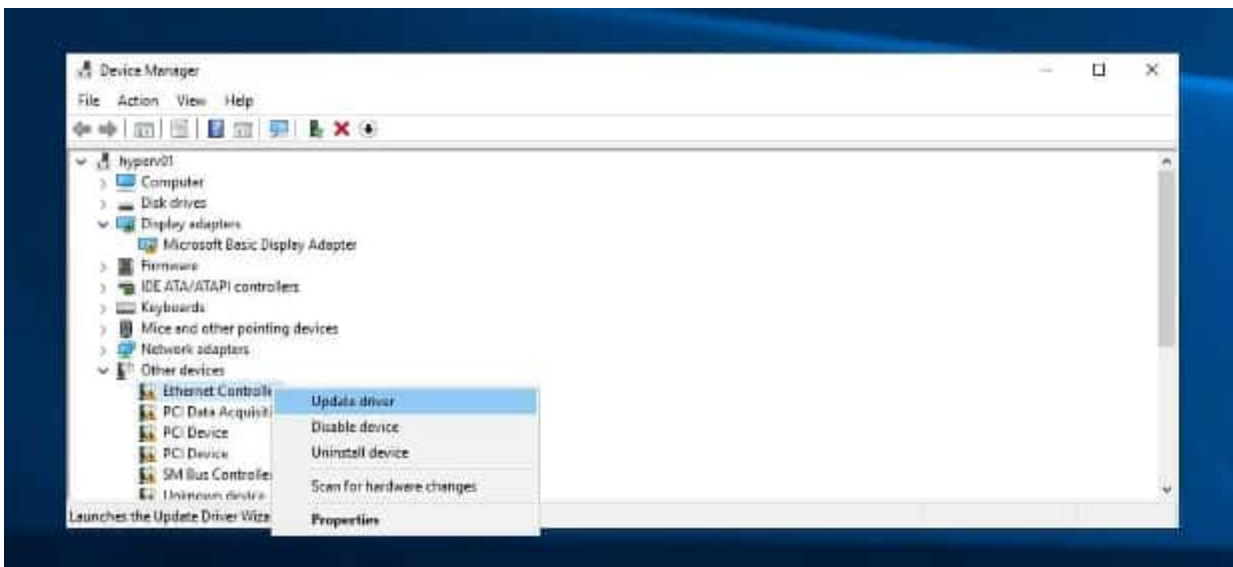
1. Download the latest **PROWinx64.exe for Windows Server 2019** from Intel including drivers for the [Intel® Ethernet Connection I219-V](#)
2. To manually install the network drivers, extract PROWinx64.exe to a temporary folder – in this example to the **C:\Drivers\Intel** folder. Extracting the .exe file manually requires an extraction utility like WinRAR or others. You can also run the .exe and it will self-extract files to the **%userprofile%\AppData\Local\Temp\RarSFX0** directory. This directory is temporary and will be deleted when the .exe terminates.
3. The driver for the Intel I219-V network adapter can be found in the C:\Drivers\Intel\PRO1000\Winx64\NDIS68.





Extracted Network Drivers for Windows Server 2019 – Intel NUC PROWinx64

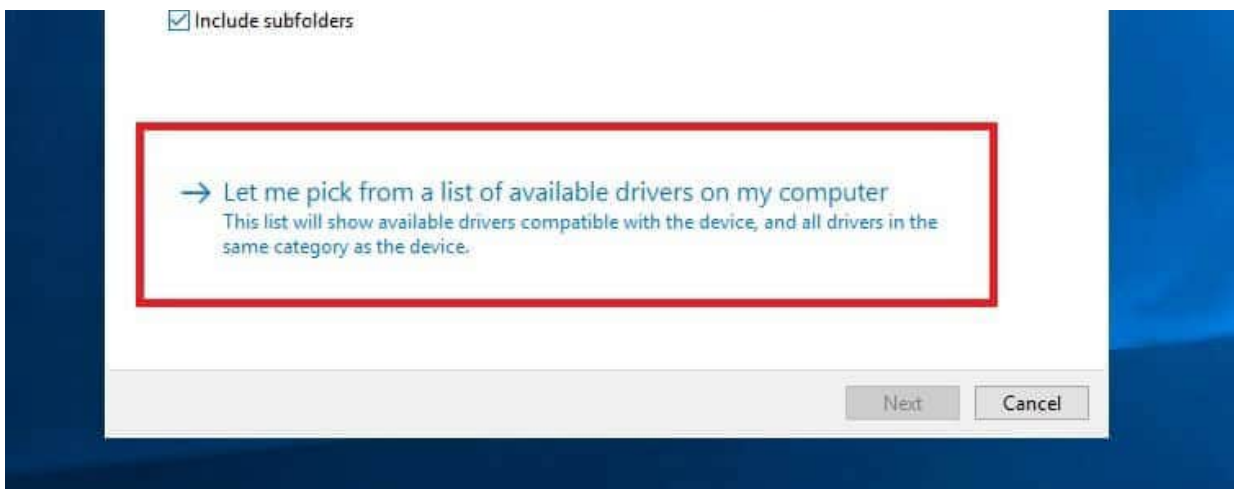
4. Open Device Manager right click on **Ethernet Controller** and select **Update Driver**.



Device Manager Update Driver Ethernet Controller – Intel NUC Windows Server 2019 Driver

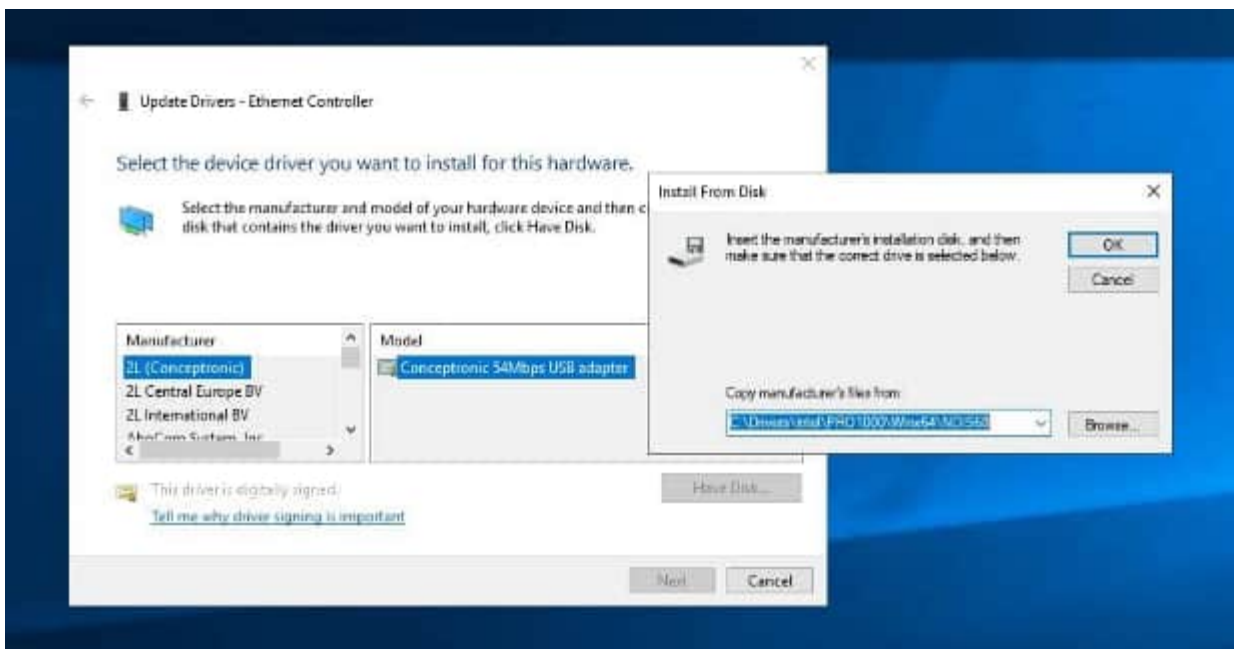
5. Select **“Browse on my computer for driver software”**, and select **“Let me pick from a list of available drivers on my computer”**, now you can select **Network Adapter**.





Update Driver

- Click on **"Have Disk..."** enter the following path **"C:\Drivers\Intel\PRO1000\Winx64\NDIS68."**



Driver Location

- Now select **Intel Ethernet Connection I219-LM** (The I219-V version is not shown)





Select the Intel Ethernet Connection I219-LM

8. And you are done.

Huge thank you again to Michael Williams for sharing that with us. I hope this short blog post provides you a step by step guide on how you can install Windows Server 2019 Network adapter drivers on the Intel NUC. If you have any questions, feel free to leave a comment.

Email address:

YOUR EMAIL ADDRESS

SUBSCRIBE

Tags: Adapter, Driver, drivers, Intel, Intel NUC, Microsoft, Network, Network Driver, Networking, NUC, Server, Windows, Windows Server, Windows Server 2019

About the Author / [Thomas Maurer](#)

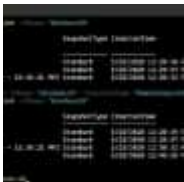


Thomas works as a Principal Program Manager & Chief Evangelist Azure Hybrid at Microsoft (Cloud + AI). He engages with the community and customers around the world to share his knowledge and collect feedback to improve the Azure hybrid cloud and edge platform. Prior to joining the Azure engineering team (Cloud + AI), Thomas was a Lead Architect and Microsoft MVP, to help architect, implement and promote Microsoft cloud technology. If you want to know more about Thomas, check out his blog: www.thomasmaurer.ch and Twitter: www.twitter.com/thomasmaurer



PREVIOUS STORY

How to Install PowerShell 7 on Windows 10 on ARM



NEXT STORY

How to Manage Hyper-V VM Checkpoints with PowerShell



Related Posts



Microsoft Certified Trainer MCT 2024-2025

Karl Wester-Ebbinghaus

July 2, 2020 at 11:03 pm

MARCH 12, 2024
CERTIFICATION

It is a pity Microsoft has removed NIC teaming from Windows 10.

When using Hyper-V and Server 2019 be assured it has crap default network settings.

I just got confirmation that I am a Microsoft Certified Trainer MCT 2024-2025. After being a Microsoft Certified Trainer in 2017, 2019,...

Affects RSC, RSS, NUMA, https://community.spiceworks.com/topic/2225989-server-2019-network-performance?page=13#entry-8907663

Also ReFS still does not work with DirectIO (other than NTFS) but there is NO single line of documentation about this all.

We have a support ticket open, I would be glad if you could join the cause.

negative official sources:

<https://techcommunity.microsoft.com/t5/failover-clustering/understanding-the-state-of-your-cluster-shared-volumes/ba-p/371889>

unofficial sources (MVP)

<https://www.windowspro.de/marcel-kueppers/refs-ntfs-vor-nachteile-dateisysteme-server-2016>

What do you think about it, can we escalate this?

SCVMM management for Azure Stack HCI 23H2
Karl Wester-Ebbinghaus
July 2, 2020 at 11:04 pm

FEBRUARY 21, 2024 • MICROSOFT AZURE

The System Center team just shared some

Install Intel NUC Windows Server 2019

Name	Application status	Application health	Last migration status
az001	Planned failover failed	Critical	11/21/2022 2:03:41 PM
az001	Tested	Healthy	Never performed

Migrate VMs to Azure Stack HCI

FEBRUARY 28, 2024

MICROSOFT AZURE

One question I get asked a lot is, how do I migrate Hyper-V or VMware VMs

(virtual machines) to Azure Stack HCI. Now

depending on your...

depending on your...

Joining Azure Adaptive Cloud Experiences (ACX) Evaluation and Community Enablement

JANUARY 30, 2024 • THOMAS MAURER

information on System Center Virtual Machine Manager (SCVMM) supporting the latest Azure Stack HCI,...

September 10, 2020 at 8:24 pm

I was able to successfully get the Intel NIC drivers updates following this installation? Would you be able to use the Export Windows Driver Powershell to then Import to a Windows Server Core installation? Thanks.

I am excited to announce that I have joined the The Adaptive Cloud Experiences (ACX) Evaluation and Community Enablement team as a Senior...

Reply

David Baum

October 26, 2020 at 8:08 pm

What about 10th generation core i7

Reply

Meagan

October 28, 2020 at 10:54 pm

Thank you so much!

Reply

Thomas Maurer

October 29, 2020 at 9:05 am

you're welcome :)

Reply

Eloy Salamanca

December 17, 2020 at 9:12 am

Hi Thomas, thanks for the simple but very useful post, that saved me a lot of extra time! Well done!

Reply

Geert De Keyser

February 10, 2021 at 8:36 am

Thomas, thank you... That was exactly what I needed :-)

Reply

Thomas Maurer

February 10, 2021 at 11:37 am

 Reply

you're welcome :)

Frank

February 19, 2021 at 2:04 pm

 Reply

To follow what "B" wrote, any guidance on getting the I219-LM driver installed on Windows Hyper-V 2019? I have used "pnputil -i -a" with all the .inf files in "... \Intel\PRO1000\Winx64\NDIS68\" from the extracted PROWinx64_26_0.exe and no luck.

To eliminate hardware issues, I installed Server 2019 (Desktop experience) and followed your instructions using the device manager and all worked well.

Any help would be greatly appreciated.

Huy

March 11, 2021 at 7:32 pm

 Reply

this worked great! did you have notes on all the other stuff? eg chipset, the Wifi controller SATA?

Leroy DSouza

April 21, 2021 at 9:41 am

 Reply

Hi Frank, did you have any luck ?

Igor

June 28, 2021 at 9:41 pm

 Reply

Anybody, any success? What about other than the network adapter drivers?

Edward

July 22, 2021 at 4:16 am

 Reply

Thank you so much. I now have a working adapter.

anaonymous

August 12, 2021 at 4:39 pm

 Reply

No longer works as the latest drivers can't be properly unpacked.

Jeff

March 23, 2022 at 1:34 pm

 Reply

If you run any setup program and pause when it gets to the question/button clicking phase you can search the TEMP folder and find the setup. If you can't figure out what folder it is then leave the temp folder open and restart the setup, you will see new folders created. That is the process that he is explaining in step number 2. To find the temp folder just click search by the start button and type %temp%.

Jeff

March 23, 2022 at 1:37 pm

 Reply

well, I guess I should say practically any, some use folders like c:\drivers, others use their own but most just go to the temp folder.

Michael Zuberbuehler

August 22, 2021 at 10:16 am

 Reply

It just installed the driver successfully on Server 2022 on a Bean Canyon NUC. Be

sure to download the version 26.3 of the driver as this can still be extracted.

Aurelien

September 1, 2021 at 3:11 pm

 Reply

Hi, thank you for this procedure.

Unfortunately I try today to fix my Intel NUC 11th generation with the Intel Card Driver I225-V but it didn't work... Intel support has confirmed that generation 9 is the last generation to support Windows Server, after that it's Windows 10 only ! So HyperV on Windows 10 :(

Charles Beltran

October 27, 2021 at 1:57 am

 Reply

Was able to use "Intel Ethernet Connection I219-LM" from using the existing "Update Drivers - Ethernet Controller, Manuf: Intel and Model: Intel Ethernet Connection I219-LM drop-down already included in both Windows Server 2019 and Server 2022.

Thomas Maurer

October 27, 2021 at 9:36 am

 Reply

awesome, that is great!

JohnnyS

December 10, 2021 at 2:17 am

 Reply

Thank you. I was working on a test box and didn't want to dig out a wifi adapter

Thomas Maurer

December 10, 2021 at 8:45 am

 Reply

Happy it worked :) Thanks for the feedback

fisedv

December 15, 2021 at 4:22 pm

 Reply

still no driver for server 2019 ?

Thomas Maurer

January 15, 2022 at 9:46 am

 Reply

I haven't found any.

Jeff

March 23, 2022 at 1:28 pm

 Reply

Thanks, worked great. The Lenovo pc I was working on was such a pain it wouldn't even recognize a wifi dongle. I worked for hours trying to get either way working, it was about to be one of those "office monitor smash" moments =).

Dave Lipman

April 25, 2022 at 11:17 pm

 Reply

Nice work – this worked great for me.

Thomas Maurer

April 25, 2022 at 11:51 pm

 Reply

Thank you!

jamie

October 26, 2022 at 9:26 pm

 Reply

very nice – thank you!

rai

November 24, 2022 at 6:55 pm

 Reply

Sir, you are GOD!

After i struggled for way too long i though “okay this is my last try, it wont work anyway.”

and there, it works. thank you so much.

(i have windows server 2016 installed, so it works also here)

Thomas Maurer

November 26, 2022 at 4:03 pm

 Reply

great it worked! Happy to help, and thanks for the feedback and the nice comment!

alex

November 28, 2022 at 2:46 pm

 Reply

Tried on my Intel NUC with 10.th Gen i7, worked fine. Thank you!

For my Intel NUC with 11.th Gen i7 i cannot get it done, always goes to This device cannot start. (Code 10)

Thomas Maurer

November 28, 2022 at 3:56 pm

 Reply

Yes, for newer generation it is a different driver.

alex

December 2, 2022 at 12:21 pm

 Reply

Do you know which one?

Martin

December 29, 2023 at 2:31 pm

 Reply

Hello Alex (and all other guys who wasted time on searching networks drivers). I have an NUC13ANHI7 running on Windows Server 2022. Download the driver package 27.8 and look for the directory:

PRO2500\Winx64\WS2022

-> Then choose Killer E3100 2.5 Gigabit Ethernet Controller

Worked for me!

Gerald

February 1, 2024 at 9:47 am

 Reply

Thank you very much for this hint. This procedure works also for Microsoft Server 2022 (trial image 5GB). In the directory NDIS68 three driver files are offered. I selected "e1d" and it offers even 10 drivers for I219-LM (10) ...(19), I219-LM(10) works fine for me.

Francois

March 7, 2024 at 11:10 am

 Reply

Thank you very much. You saved me ! I lost 6 hours to solve my problem. I work with Microsoft Server 2022.

Thomas Maurer

March 7, 2024 at 11:03 pm

 Reply

awesome, thank you! Happy to help!

Leave a Reply

Your email address will not be published. Required fields are marked *

Comment *

Name *

Email *

Website

Save my name, email, and website in this browser for the next time I comment.

Sign me up for the weekly update!

POST COMMENT

This site uses Akismet to reduce spam. [Learn how your comment data is processed.](#)

ABOUT THOMAS MAURER





My name is Thomas Maurer. I am a Principal Program Manager & Chief Evangelist for Azure Hybrid at Microsoft. I am part of the Azure engineering team (Cloud + AI) and engage with the community and customers around the world. Opinions are my own.

SUBSCRIBE

Email address:

SUBSCRIBE

SPONSORS

Your AD here



SPLIT BRAIN

Azure Stack HCI

- Consultancy
- Implementation
- Training
- Managed Services



Free PowerShell cheat sheet



order a free copy



NEW

VM BACKUP



**BACKUP
V9**

Ransomware Protection
leveraging Immutable
Cloud Storage

GET YOUR FREE TRIAL

[HOME](#) | [ABOUT](#) | [SPEAKING](#) | [SHOP](#) | [BOOKING](#) | [PRIVACY](#)
[POLICY](#) | [CONTACT](#) | [DONATE](#) | [SUBSCRIBE](#)



Management